



INSTRUCTION BULLETIN

No. 340498
Machine: 6200
Published: 8-01/00
System: SWEEPING

NOTE: DO NOT DISCARD the Parts List from the Instruction Bulletin. Place the Parts List in the appropriate place in your machine manual for future reference. Retaining the Parts List will make it easier to reorder individual parts and will save you the cost of ordering an entire kit.

NOTE: Numbers in parenthesis () are reference numbers for parts listed in Bill of Materials.

Installation instructions for kit number 374709

SYNOPSIS / PROBLEM:

This kit contains the parts needed to install/replace the hopper lift pump on the model 6200 sweeper/scrubber.

Please follow step-by-step instructions.

SPECIAL TOOLS / CONSIDERATIONS: NONE

(Estimated time to complete: 1 hours)

PREPARATION:

(Refer to FIG. 1 and 2)

FOR SAFETY: Before leaving or servicing machine, stop on level surface and set parking brake. Then turn off machine and remove key.

1. Turn the machine power on.
2. Empty the debris hopper.

NOTE: Be aware that the minimum ceiling height needed to high dump the hopper is 2286mm (90 in).

FOR SAFETY: When using machine, make sure adequate clearance is available before raising hopper.



WARNING: Lift arm pinch point. Stay clear of hopper lift arms.

3. Disconnect battery cables from machine.



WARNING: Always disconnect battery cables from machine before working on electrical components.

INSTALLATION:

(Refer to FIG. 1 and 2)

1. Remove and set aside the seat mounting plate.
2. Disconnect and remove the left rear and far left batteries. Cover the terminals on the remaining batteries to prevent short circuits.
3. Disconnect the hydraulic lift pump from the electrical harness.

4. Remove the two bolts and spacers holding the lift pump. Support the pump to prevent straining the hydraulic hoses to the lift cylinder. It is not necessary to disconnect the hydraulic lines.
5. Drill four 7/16 in [11.11 mm] diameter holes as shown in figure one. (Refer to FIG. 1)
6. Drill two 1-1/8 inch diameter holes using the original pump mounting holes as pilots. It is recommended that a wood block be clamped behind the panel while drilling. This will reduce the distortion of the panel around the holes. These two holes are tool access holes for the pump mount bolts on the new mounting plate. (Refer to FIG. 1 and 2)
7. Clean the surface on the left hand lift tower and the adjacent surface of the back side of the seat support panel. All oils and dirt must be removed to ensure good adhesion of the acoustic insulation. (Refer to FIG. 2)
8. Remove the protective film from side piece of acoustic insulation (3), and install it on the left hand lift tower in the hopper area. (Refer to FIG. 2)
9. Install the front piece of acoustic insulation (2) on the rear surface of the operator's compartment. The short side of this piece should but up against the long side of the side piece (3). (Refer to FIG. 2)
10. Install the new pump mount plate (1) using four isolator bushings (5), isolator rings (4), tubes (6), M6 hex bolts (8), M6 lock nuts (9) and eight flat fender washers (7).
11. Replace the hydraulic lift pump using the original bolts and spacers. The bolts go through the new mount plate, spacers and into the body of the pump. Tighten bolts to 3.3-4.3 Nm.
12. Reconnect the pump electrical harness. Top-off the hydraulic oil in the pump reservoir if needed. Do not over-fill.
13. Replace the batteries, reconnect the electrical cables and replace the seat and mount assembly.
14. Raise the hopper and disengage the hopper support bar. Lower the hopper to the sweeping position. Raise the hopper to the maximum height and re-engage the hopper support bar. Check the pump reservoir for over flow or leakage. If the over flow or leakage occurs, see the operator's manual for corrective procedures.
15. Turn the machine power on.
16. Raise the debris hopper, and disengage the hopper support bar.
17. Lower the debris hopper and check the machine for proper operation.

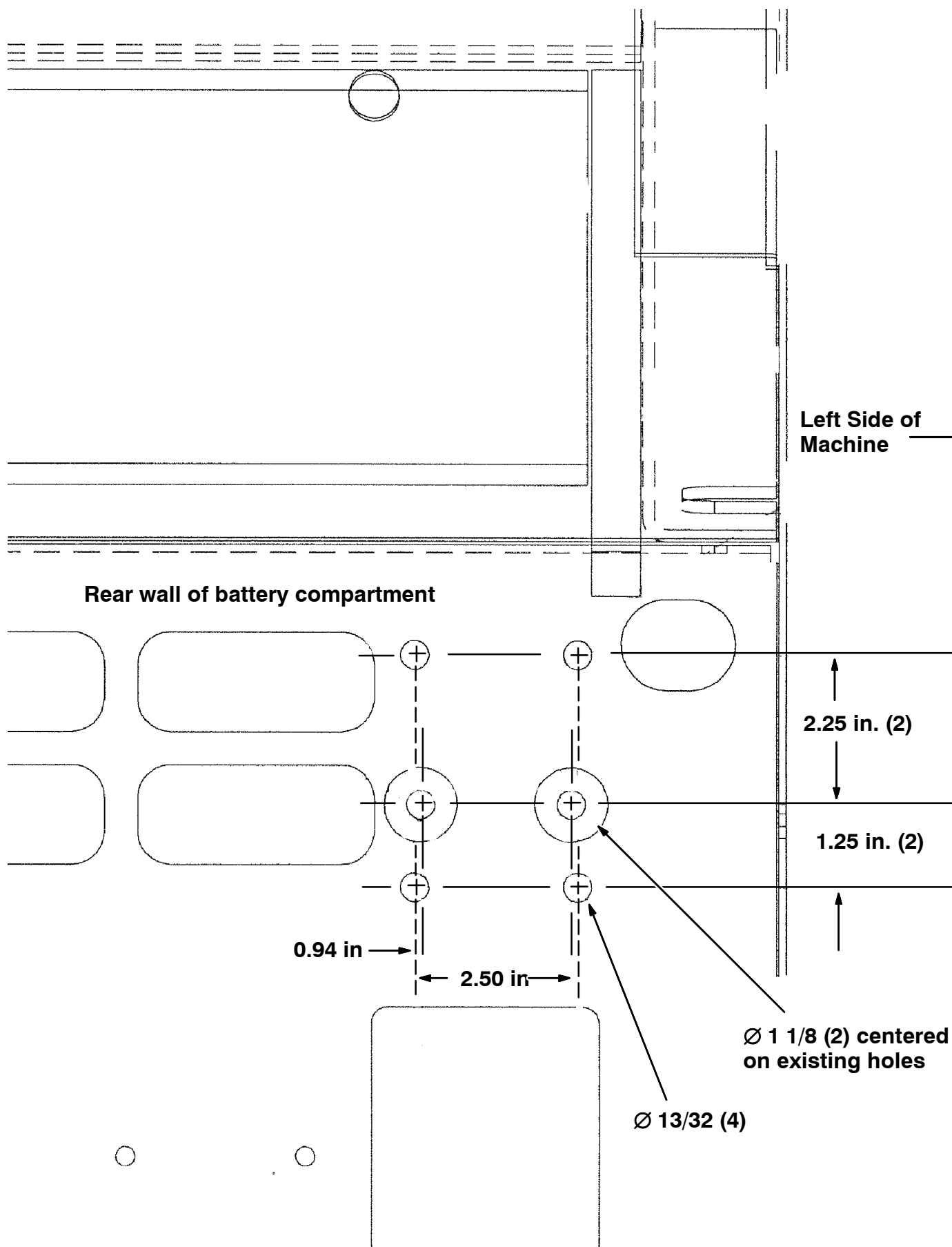


FIG. 1 - Mounting Hole Locations, Isolator, Hopper Lift Pump

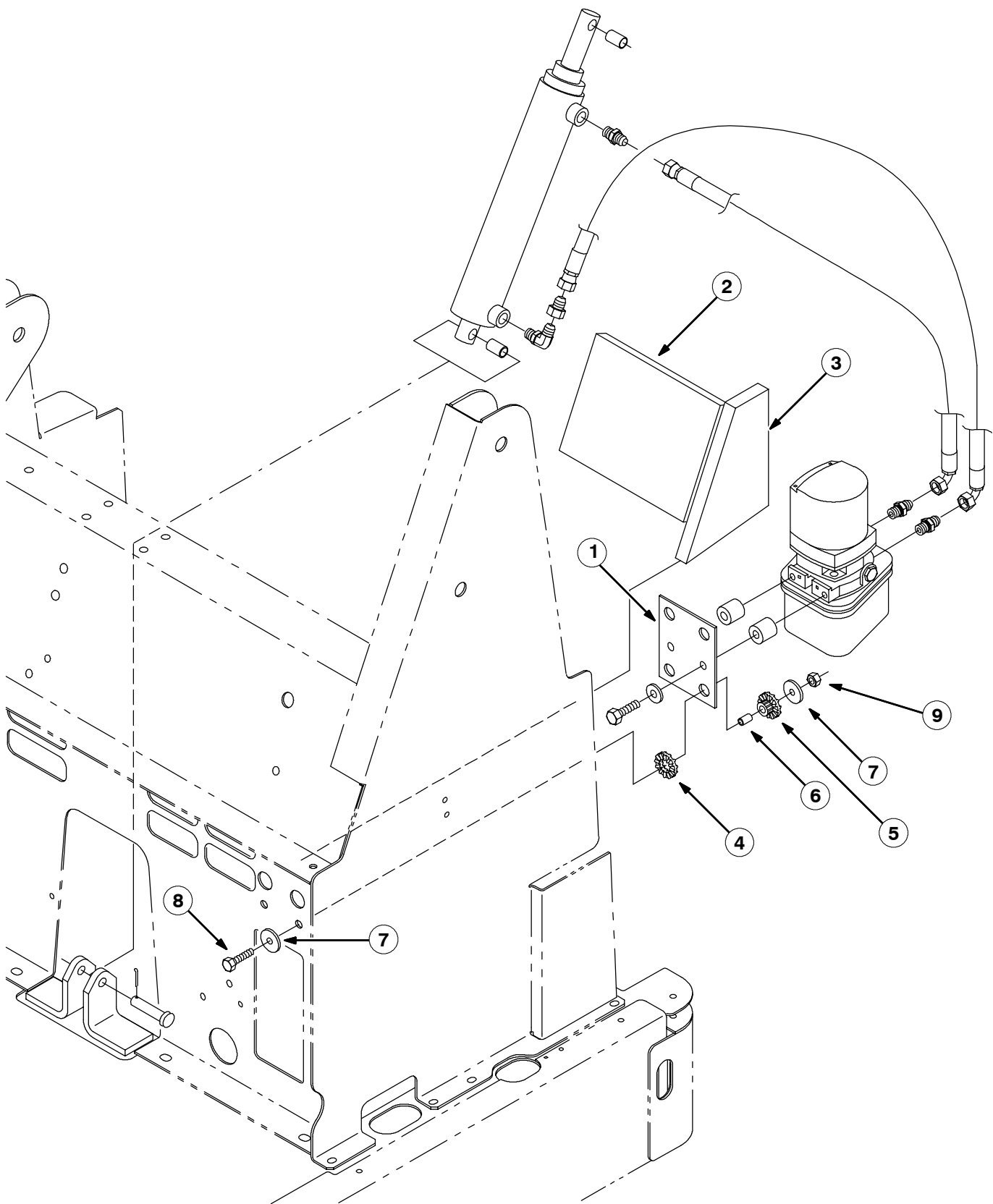


FIG. 2 - Installation, Isolator, Hopper Lift Pump

BILL OF MATERIALS FOR HOPPER LIFT PUMP KIT 374709

| Ref. | TENNANT Part No. | Description | Qty. |
|-------------|-----------------------------|---|-------------|
| 1 | 393421 | Plate, mtg, hyd pump | 1 |
| 2 | 374693 | Insulation, acstc, front | 1 |
| 3 | 374694 | Insulation, acstc, side | 1 |
| 4 | 62172 | Isolator, VIB, ring, 1.4D 0.7L 0.8B | 4 |
| 5 | 62173 | Isolator, VIB, bshg, 1.4D 0.7L 0.4B 0.68H PLT | 4 |
| 6 | 64905 | Tube, 0.38D 0.26B 0.6L STL | 4 |
| 7 | 30013 | Washer, flat, 0.31 fender | 8 |
| 8 | 06946 | Screw, hex, M06 X 1.0 X 35, 8.8 | 4 |
| 9 | 08708 | Nut, hex, lock, M06 X 1.0, NL | 4 |

TENNANT COMPANY
P. O. Box 1452
Minneapolis, MN 55440-1452